



**KATHMANDU**

25-28 MARCH 2019 / KATHMANDU, NEPAL

**19<sup>TH</sup> GENERAL MEMBERSHIP MEETING OF THE  
REPRODUCTIVE HEALTH SUPPLIES COALITION**



# AAWG Humanitarian Workstream Updates

Sarah Rich, Women's Refugee Commission



## What did we commit to last year?

**Objective: Increased understanding and information sharing on what is needed across diverse crisis-affected settings for RH supplies**

**Activity 1:** Start up collaboration with IAWG & define interest of members to join this group

**Activity 2:** Develop background document on the issue (based on webinar in previous year)

**Activity 3:** Develop one pager on advocacy asks for RH supplies in humanitarian settings

**Activity 4:** Co-host a joint in-person meeting with IAWG at ICFP



## What did we do?

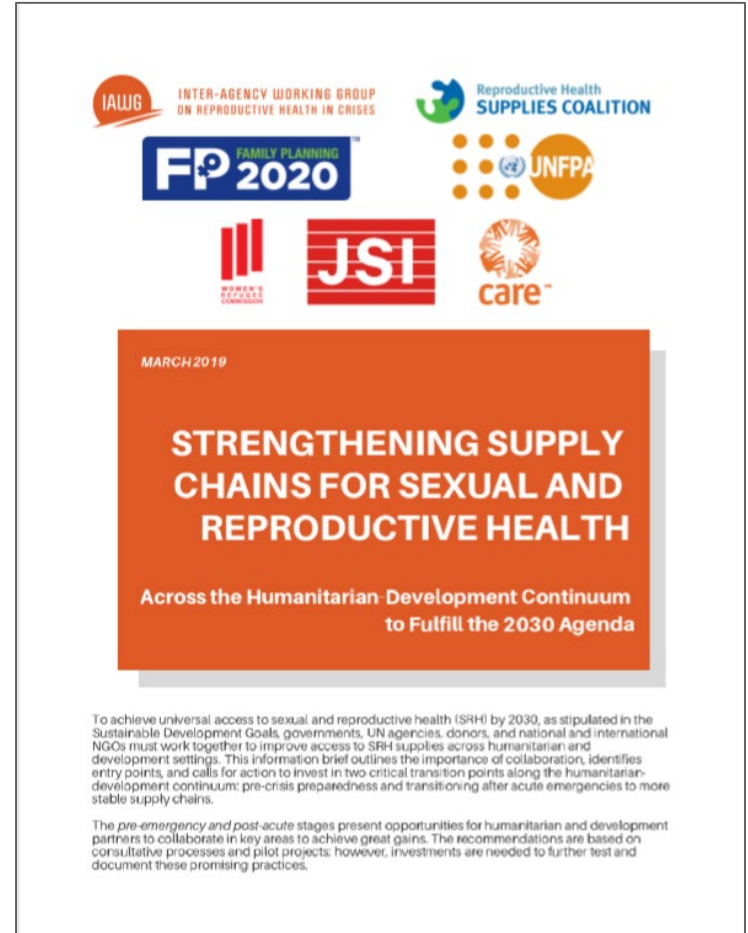
✓ Co-hosted a joint in-person meeting with IAWG\* at ICFP

Over 40 people from across the humanitarian and development sectors attended

Presentations and discussion focused on improving SRH supplies across the humanitarian-development continuum

✓ Developed technical brief, which can be used to support advocates:

<http://iawg.net/resource/strengthening-supply-chains-brief/>



\*IAWG: Inter-agency Working Group on Reproductive Health in Crises



## Main points of the brief

Many entry points to improve supply chains occur *before or after* the onset of an acute crisis - not at the height of the emergency.

Collaboration is needed across the humanitarian-development continuum (govts, NGOs, UN agencies, donors) on two key transition points:

- strengthening pre-crisis preparedness

- transitioning after acute emergencies to more stable and uninterrupted supply chains



## Challenges we faced

### Managing two groups:

- IAWG Supplies Sub-working Group

- RHSC AAWG Humanitarian Workstream

IAWG Supplies working group was already established and functioning

However, advocates in RHSC can play a key role, especially in areas that cross the humanitarian-development continuum

How to engage more RHSC members in this work to leverage expertise?

- Co-lead from a traditionally “development” partner?