

# Delivering on a Promise: The Story of Myanmar's RH Supply Chain



GENERAL MEMBERSHIP MEETING  
— of the —  
REPRODUCTIVE HEALTH  
SUPPLIES COALITION

10-14 OCTOBER 2016

#RHSUPPLIES2016



From the very beginning, this is a story of political commitment for reproductive health

....and the systems to deliver products.



HEARTBEAT OF THE NATION

# MYANMARTIMES

Health officials want better contraception supply chain



Myanmar FP2020 Commitment



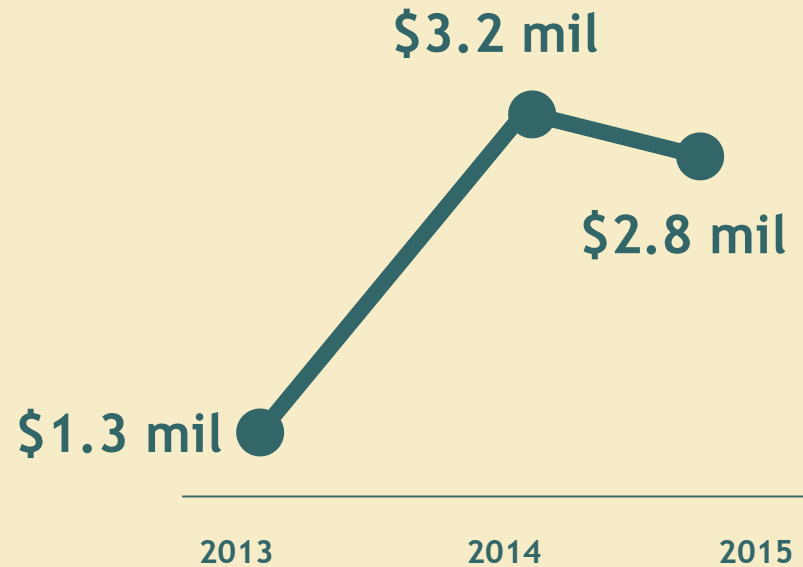
Commitment from the first mile



**To the last mile**

2011

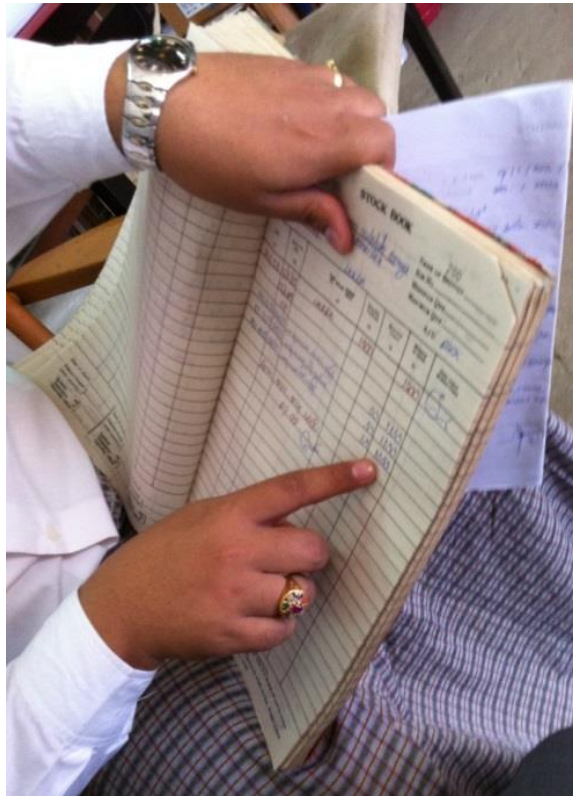
Myanmar  
commits a  
budget line  
item for RH  
supply chains.



Government contribution  
to RH supplies

2013

Conduct baseline **supply chain assessment**. Few standardized systems and tools.



2013



Begin to align systems and processes through system design

2014



2,000 health staff are trained  
in new RH logistics system



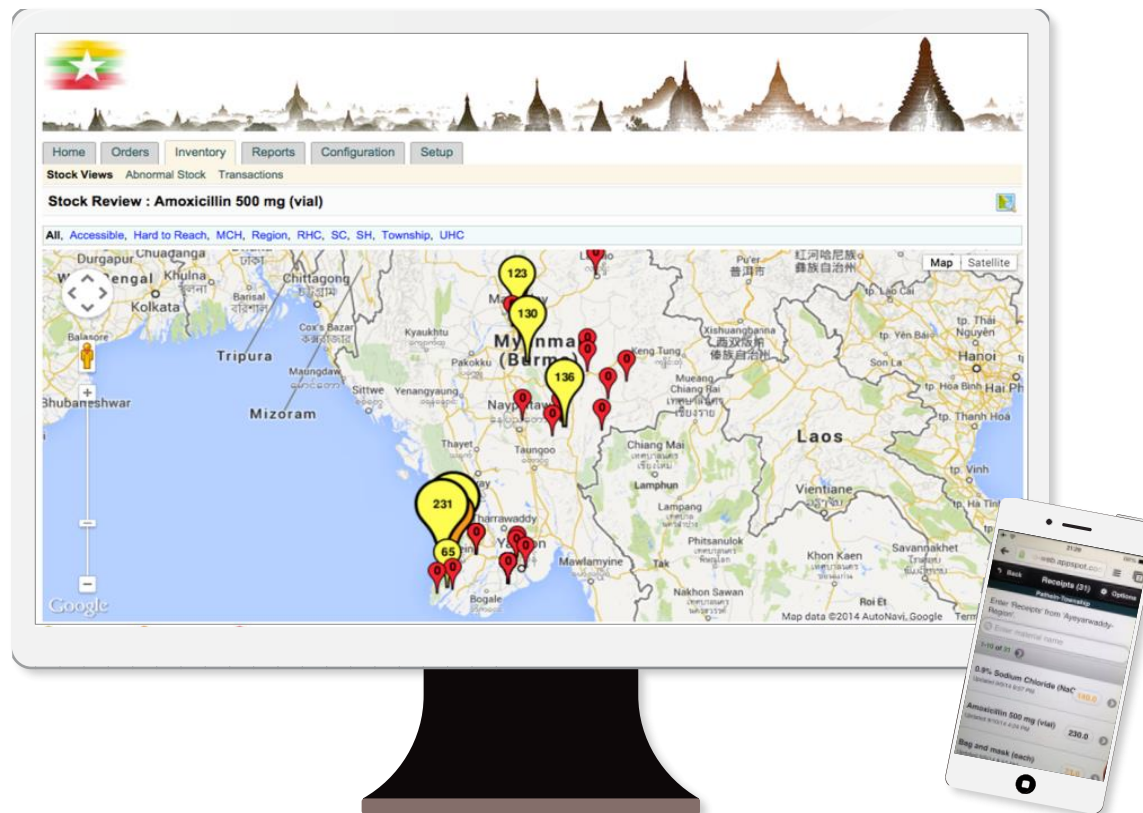


“Doing well for the RHC-LS means I get more products so more patients come to my sub-center.”

Midwife, Mandalay Region

2014

Develop an electronic dashboard and associated tools capture information



#RHSUPPLIES2016



“ The data in the automated system helps show the difference between my thinking and reality; I always thought male condoms were overstocked, and yet now I see stock outs in many facilities for these products.”

*Senior Health Official Regional Office*



“We can now see our consumption of products and be able to project what we will need for next month.”

*RHC Midwife*

2015



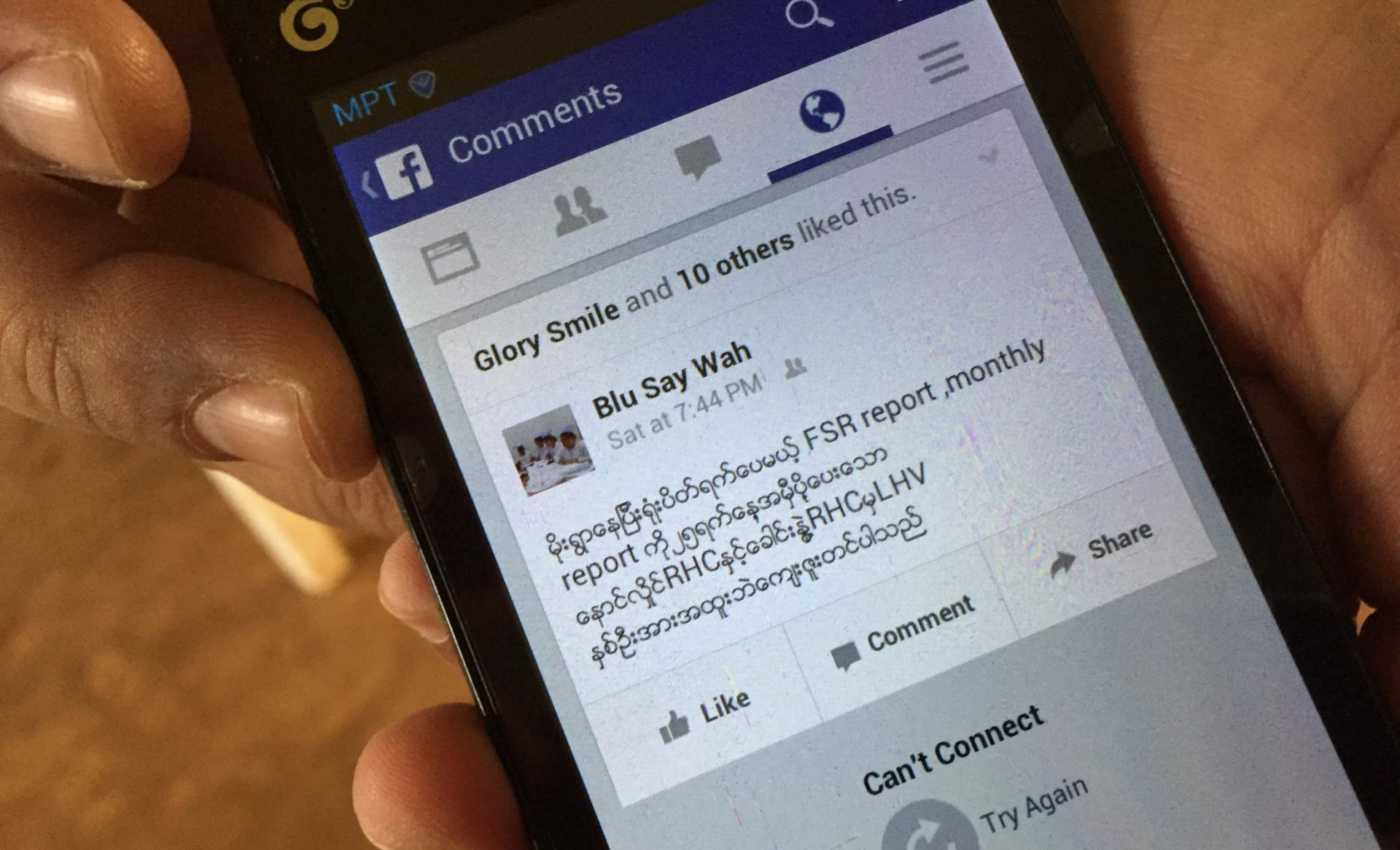
Quality improvement teams introduce a process for reviewing data for decision making

2016

**QITs drive action**  
**Over 800 transfers**  
**of products in the**  
**6 QIT townships,**  
compared with  
just 70 in the 6  
non-QIT  
townships.



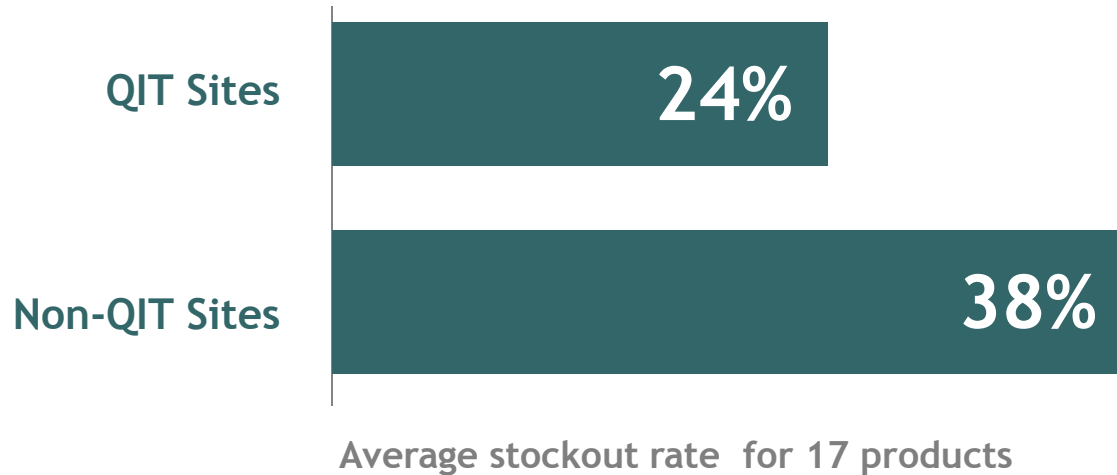
#RHSUPPLIES2016



Staff commitment QIT process is high. Use multiple platforms to recognize performance.

2016

Evidence shows improved product availability, as demonstrated by decreased stockouts in QIT sites.



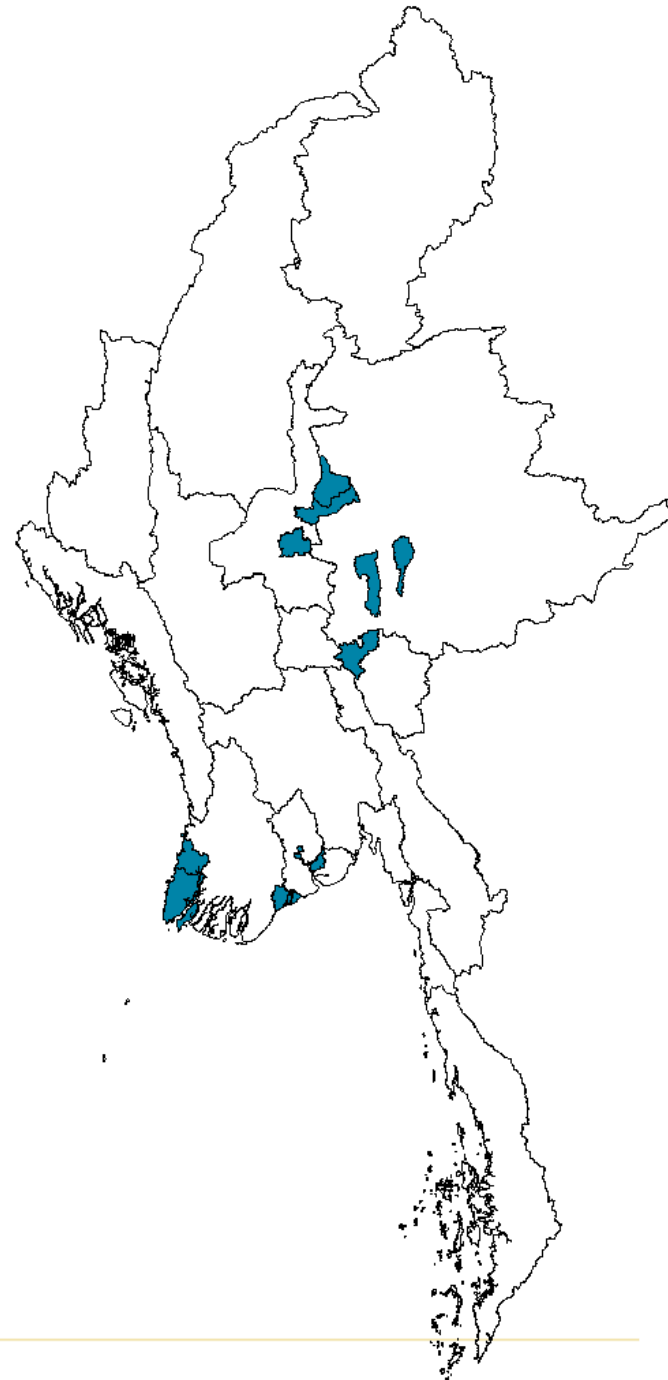




Based on this success and evidence, the MOH decides to scale the RHC-LS nationally.

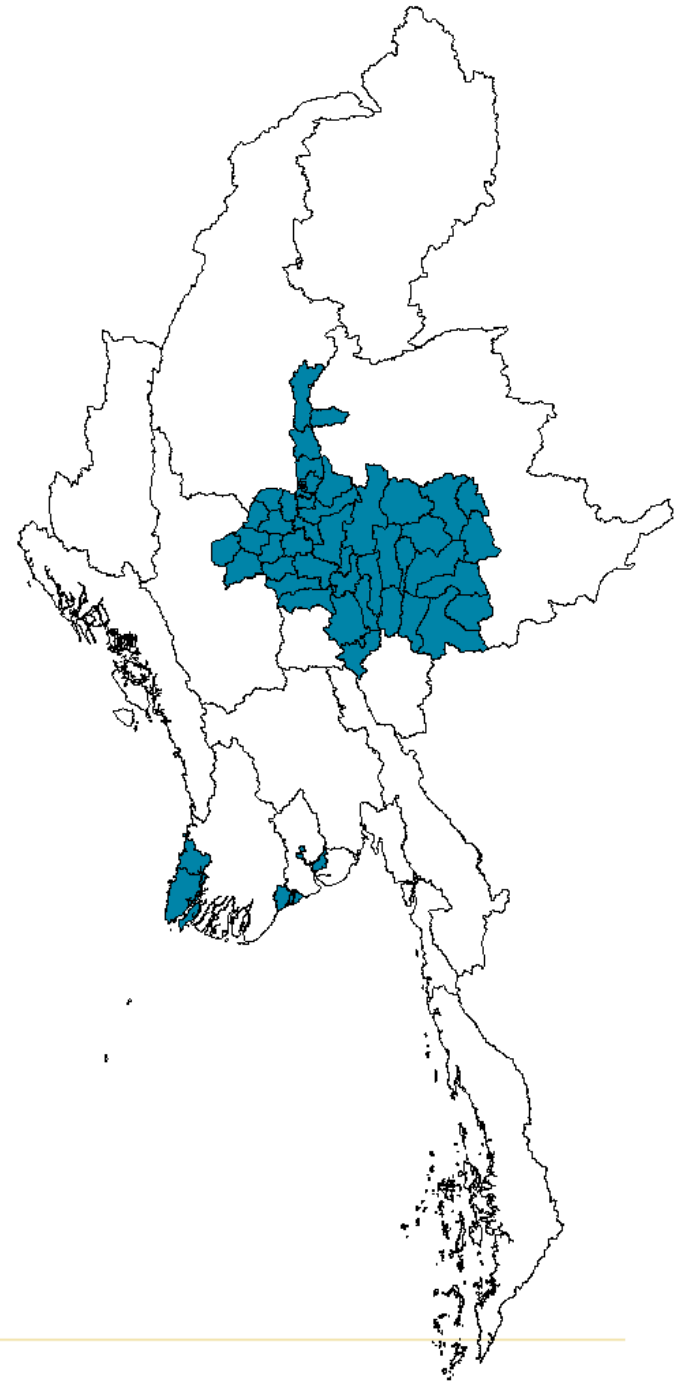
2013

RHC-LS  
piloted in 12  
townships.



2016

By the end of  
2016, **55**  
**townships** will be  
using the system.



2018

All townships (330)  
expected to be  
using the RHC-LS.

Will expand to  
include with  
essential  
medicines.





It takes many partners to scale a system.



Save the Children®



Logistimo



EVERY WOMAN  
EVERY CHILD





cè-zù tin-ba-deh

Thank you!









22

ICC  
SHE-10/10/10  
2015